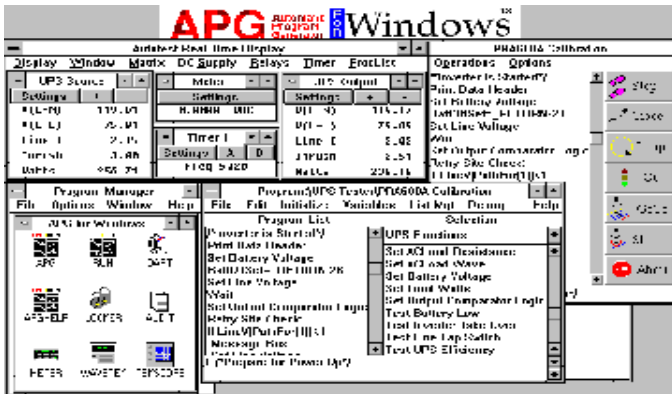


Intelligent UPS Tester

UPS technological advancements have resulted in high performance power supplies that are less costly and easier to manufacture. Today's smart UPS provides computer ports, not only for network communications, but also for configuring, calibrating and testing the UPS. But is there ATE available to Calibrate and Test them? The *UPT-2000* from Autotest Company provides the ultimate in UPS ATE technology. By taking full advantage of its power supply ATE instrumentation, Autotest has developed a Universal UPS Tester with custom configuration instrumentation to meet almost any test scenario.



The *UPT-2000* is enhanced with Autotest's *APG for Windows™*, the industry accepted multi-tasking software standard. This versatile and powerful ATE software package combines the power of the Microsoft Windows™ platform with the flexibility and precision of Autotest's modular instrumentation systems. APG's Application Specific language approach, along with interactive program creation, diagnostics modules and the DART (Design and Repair Testing) real-time control and display system, combine to take full advantage of the *UPT-2000*'s instrumentation superiority. This provides the fast, user-friendly universal testing approach demanded by state-of-the-art ATE users.



UPT-2000 standard configurations may be used as sub-assembly or final assembly UPS testers, with the ability to automatically provide stimulus and measurement calibration and verification. With the versatility of the Windows based software, the *UPT-2000* can download configuration and calibration data as part of the computer interactive UPS assembly test program.

UPT-2000 Enhanced Test Abilities Include:

- Calibration and Configuration Download
- RS232 Communications
- SNMP Communications
- UPS Logic Status
- Crest Factor AC Load Regulation
- On Line Efficiency
- On Battery Efficiency
- Short Circuit Protection
- Battery Bus Status
- THD

AUTOTEST UPT-2000 Specifications:

CONTROLLER

CPU: Pentium
Memory: Dynamic RAM
4.3G+ Fixed Hard Drive
3 1/2, 1.44 MB Diskette Drive, CD ROM
Video: 14" Super VGA Color Monitor
Mouse: Industry Standard
Peripheral I/O: RS 232C, parallel interface, IEEE-488 (additional parallel/serial ports, and modem available)

MEASUREMENT SYSTEM - Simultaneous Line Source

UPS Source

RMS voltage, RMS current, peak current, peak Inrush current, True power

UPS Output

RMS voltage, RMS current, peak current, peak Inrush current, True power

Optional:

DC voltage, DC current, peak current, peak Inrush current, 6 1/2 Digit Multi-Function DMM

Universal Timer Counter

Modes: Frequency, Time Interval, Totalizer

Digital Driver / Receiver Interface

16 TTL/RS422 drivers/receivers w/ programmable references

SOFTWARE

Operating System: MS Windows 95

APG for Windows™ High Performance Multi-Tasking Software System that includes such features as:

- Expandability with named Procedure and Function definitions similar to ATLAS.
- Library and data management facilities comparable to Modula-2 and DODs ADA.
- A powerful editor and complete debugging facilities with statement-by-statement inspection of an executing program.

Design And Repair Testing (DART) - Allows manual control of the UPT-1000 using the keyboard and/or a Mouse Providing:

- A Real Time Display of all measurement systems.
- Control of all system resources through pull down menus and dialog windows.
- Individual Instrument Windows to provide a Multi-Media style test system control of all test instruments.

OPTIONS

Auxiliary Multi-Channel AC Load Switching
Programmable DC Loads & Sources
Distortion Analyzers
Tektronix Digital Storage Oscilloscopes
Digital Multimeter - 6 1/2 Digit
High Frequency Matrix
AC Power Sources - Variac/Solid State AC, 1 & 3
Relay Interface additions
Programmable Resistor Module
PCI IEEE-488 Instruments
Computer & Peripheral Upgrades
SNMP Communications
Complete Turn-Key Programs and Fixtures

SOURCES AND LOADS

Solid State AC Source

Standard

Power: 1500 VA Single Phase Auto-Transformer
Voltage: 0 - 270 VAC
Accuracy: ± 0.5% FS
Resolution: 0.1 VAC
RMS Current: 15.0 A
Peak Current: 42.0 A

Optional Solid State Sources

3000 VA Single Phase	4500 VA Single Phase
2250 VA Three Phase	4500 VA Three Phase
9000 VA Three Phas	13500 VA Three Phase

Electronic AC Loads

Standard

Power: 1250 Watts Single Phase
Voltage: 0 - 280 VAC
Current: 0 - 15.0 AAC
Frequency: 50, 60, 400 Hz
Modes: Constant-Current, Crest Factor
Constant Resistance, Short Circuit

Optional

Single/Three Phase - Parallel 1250 Watts up to 5000 Watts

DC SOURCES (Optional)

Voltages: 0 - 35 VDC, 0 - 56 VDC, 0 - 75 VDC, 0 - 110 VDC
Power: 700 Watts, 1125 Watts, 2250 Watts, 3375 Watts
Battery Boast: 24 VDC, 36 VDC, 48 VDC, 60 VDC
Peak Current: 42.0 A

Frequency: 45 to 6500 Hz

ELECTRONIC DC LOADS (Optional)

Power: 150 Watts, 500 Watts, 1000 Watts,
1500 Watts, 2000 Watts
Modes: Constant-Current, Constant Voltage,
Constant Resistance, Short Circuit

INTERFACES

Operator: Super VGA monitor, Mouse control, DART instrument control, front panel switches, system power, UUT power.

UUT: Unit Under Test adapted with industry standard connectors in a functionally logical interface matrix.

Selftest: Hardware and software for full test and calibration using 6 1/2 digit system meter as traceable reference standard (optional)

AUTOTEST

Engineered Solutions for Power Supply Testing

Autotest Company

5347 Dietrich Road
San Antonio, Texas 78219-2997

Fax: (210) 661-3624

Phone: (210) 661-8661

Web: www.autotest.com

E-mail: sales@autotest.com